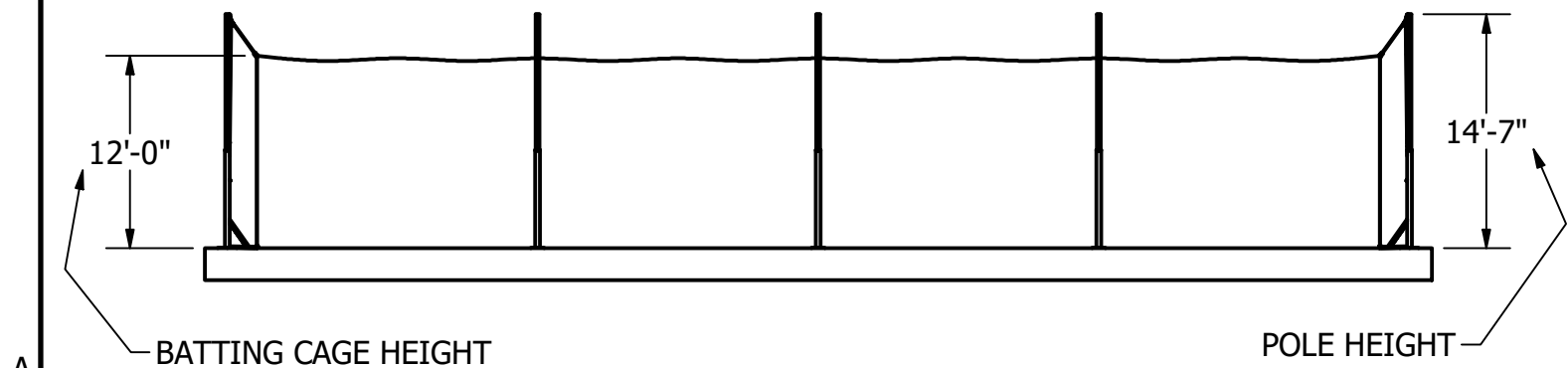
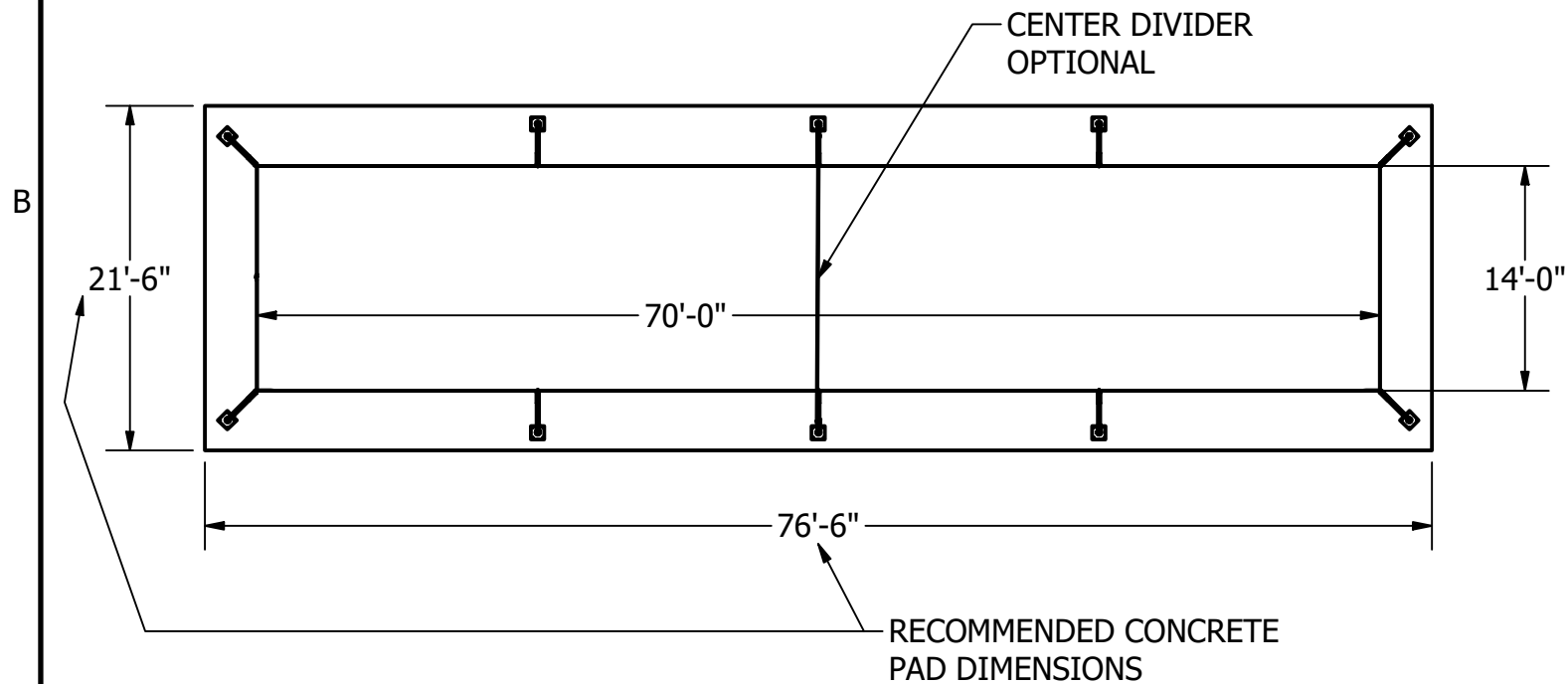
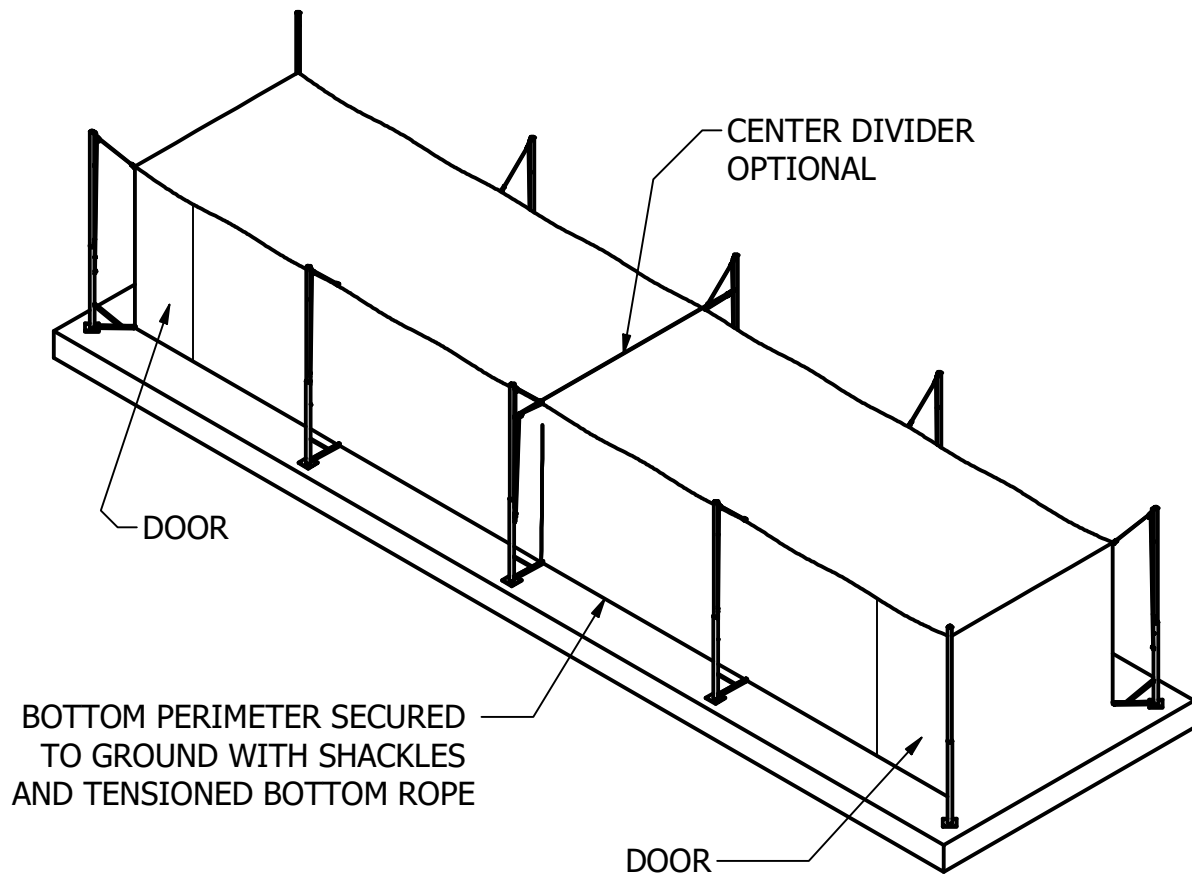


BC201 70'L X 14'W X 12'H
POLE SUPPORTED BATTING CAGE SYSTEM



FLANGED SYSTEM SHOWN, SLEEVE OPTIONAL, PLEASE SPECIFY



BOTTOM PERIMETER SECURED
TO GROUND WITH SHACKLES
AND TENSIONED BOTTOM ROPE

NOTES:

1. 4' WIDE ENTRY FLAP (OVERLAP) DOOR
2. NETTING 1-3/4 SQ BLACK, SPECIFY MATERIAL BELOW
3. POWDER COATED 3 1/2" BASE POLES, 2-7/8" TOP POLES WITH POLYESTER ROPE FOR TENSIONING NET
4. BOTTOM ROPE TENSIONED AND SECURED TO POLES TO HOLD NET BOTTOM IN POSITION
5. FLANGE ANCHOR BOLTS, (40) 1/2" X 7" HOT DIP GALVANIZED WEDGE ANCHOR BOLTS
6. CONCRETE SLAB BY OTHERS, MIN RECOMMENDED SIZE 21'-6" X 76'-6", 5" THICK WITH 1'DP X 3'WD THICKENED PERIMETER FOR ANCHOR BOLT.

(PLEASE SPECIFY):

NETTING: ☐ #42 HDPE, ☐ #42 KNOTTED NYLON, ☐ #36 KNOTTED NYLON NETTING
☐ FLANGED OR ☐ SLEEVED POLES
CENTER DIVIDER: ☐ YES, ☐ NO
PITCHING TARGET: ☐ YES QTY:____, ☐ NO
SOFT TOSS NET: ☐ YES QTY:____, ☐ NO

THIS PRINT IS THE PROPERTY OF
GRAND SLAM SAFETY LLC AND MAY
NOT BE REPRODUCED WITHOUT
WRITTEN PERMISSION

GRAND SLAM
SAFETY

WWW.GRANDSLAMSAFETY.COM

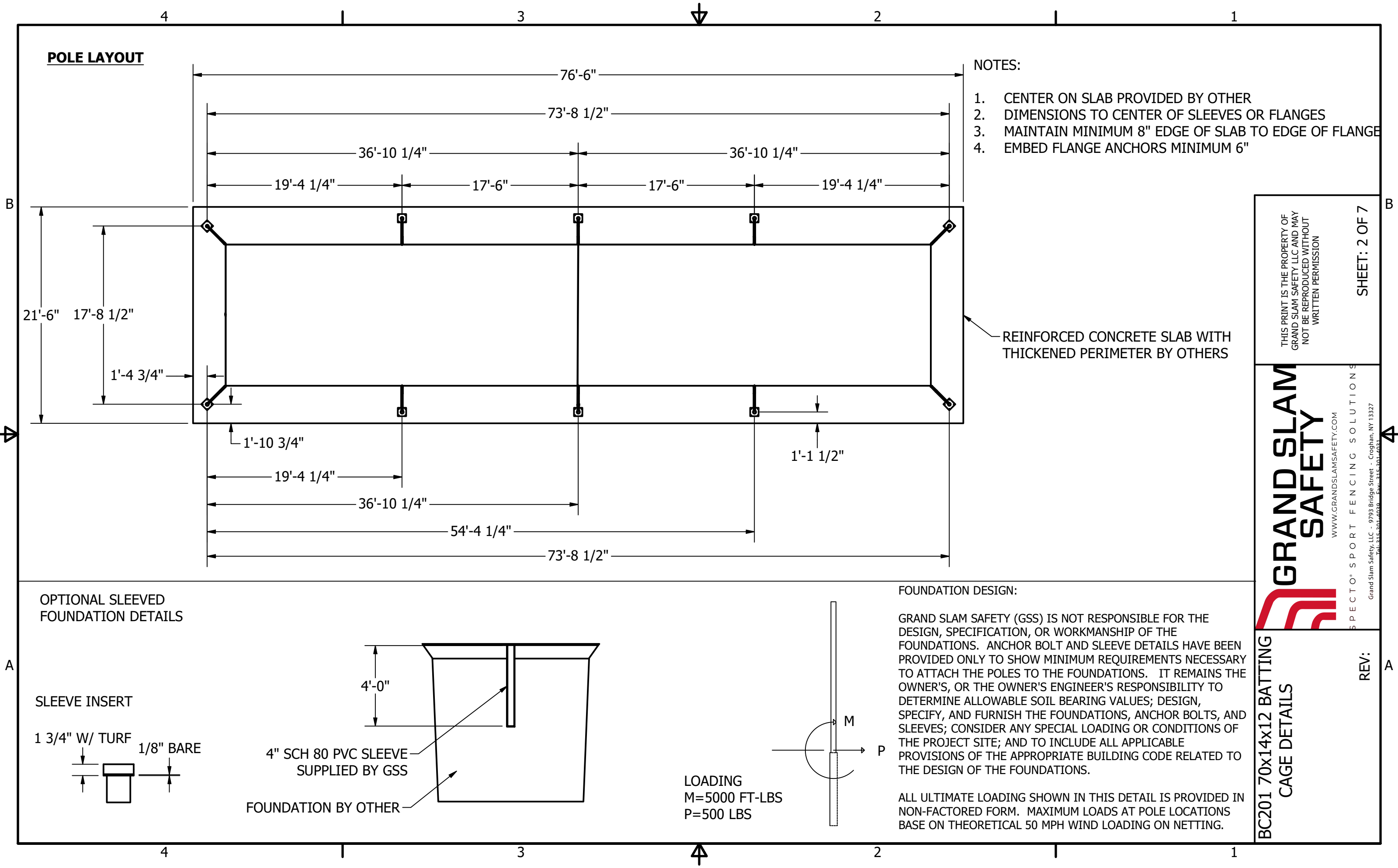
SPECTO® SPORT FENCING SOLUTIONS

Grand Slam Safety, LLC - 9793 Bridge Street - Croghan, NY 13327
Tel: 315-301-4030 Fax: 315-301-4031

BC201 70x14x12 BATTING
CAGE DETAILS

REV:

SHEET: 1 OF 7



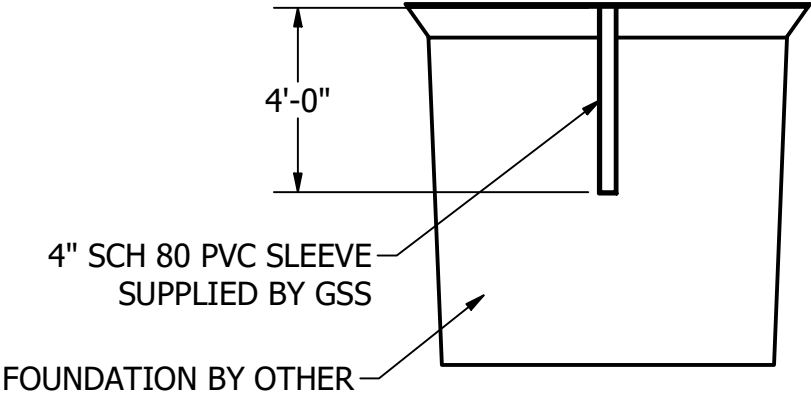
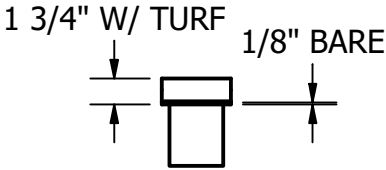
POLE LAYOUT

- NOTES:
- 1. CENTER ON SLAB PROVIDED BY OTHER
 - 2. DIMENSIONS TO CENTER OF SLEEVES OR FLANGES
 - 3. MAINTAIN MINIMUM 8" EDGE OF SLAB TO EDGE OF FLANGE
 - 4. EMBED FLANGE ANCHORS MINIMUM 6"

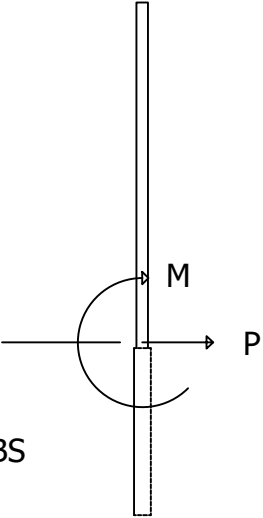
REINFORCED CONCRETE SLAB WITH THICKENED PERIMETER BY OTHERS

OPTIONAL SLEEVED FOUNDATION DETAILS

SLEEVE INSERT



LOADING
M=5000 FT-LBS
P=500 LBS



FOUNDATION DESIGN:

GRAND SLAM SAFETY (GSS) IS NOT RESPONSIBLE FOR THE DESIGN, SPECIFICATION, OR WORKMANSHIP OF THE FOUNDATIONS. ANCHOR BOLT AND SLEEVE DETAILS HAVE BEEN PROVIDED ONLY TO SHOW MINIMUM REQUIREMENTS NECESSARY TO ATTACH THE POLES TO THE FOUNDATIONS. IT REMAINS THE OWNER'S, OR THE OWNER'S ENGINEER'S RESPONSIBILITY TO DETERMINE ALLOWABLE SOIL BEARING VALUES; DESIGN, SPECIFY, AND FURNISH THE FOUNDATIONS, ANCHOR BOLTS, AND SLEEVES; CONSIDER ANY SPECIAL LOADING OR CONDITIONS OF THE PROJECT SITE; AND TO INCLUDE ALL APPLICABLE PROVISIONS OF THE APPROPRIATE BUILDING CODE RELATED TO THE DESIGN OF THE FOUNDATIONS.

ALL ULTIMATE LOADING SHOWN IN THIS DETAIL IS PROVIDED IN NON-FACTORED FORM. MAXIMUM LOADS AT POLE LOCATIONS BASE ON THEORETICAL 50 MPH WIND LOADING ON NETTING.

THIS PRINT IS THE PROPERTY OF
GRAND SLAM SAFETY LLC AND MAY
NOT BE REPRODUCED WITHOUT
WRITTEN PERMISSION

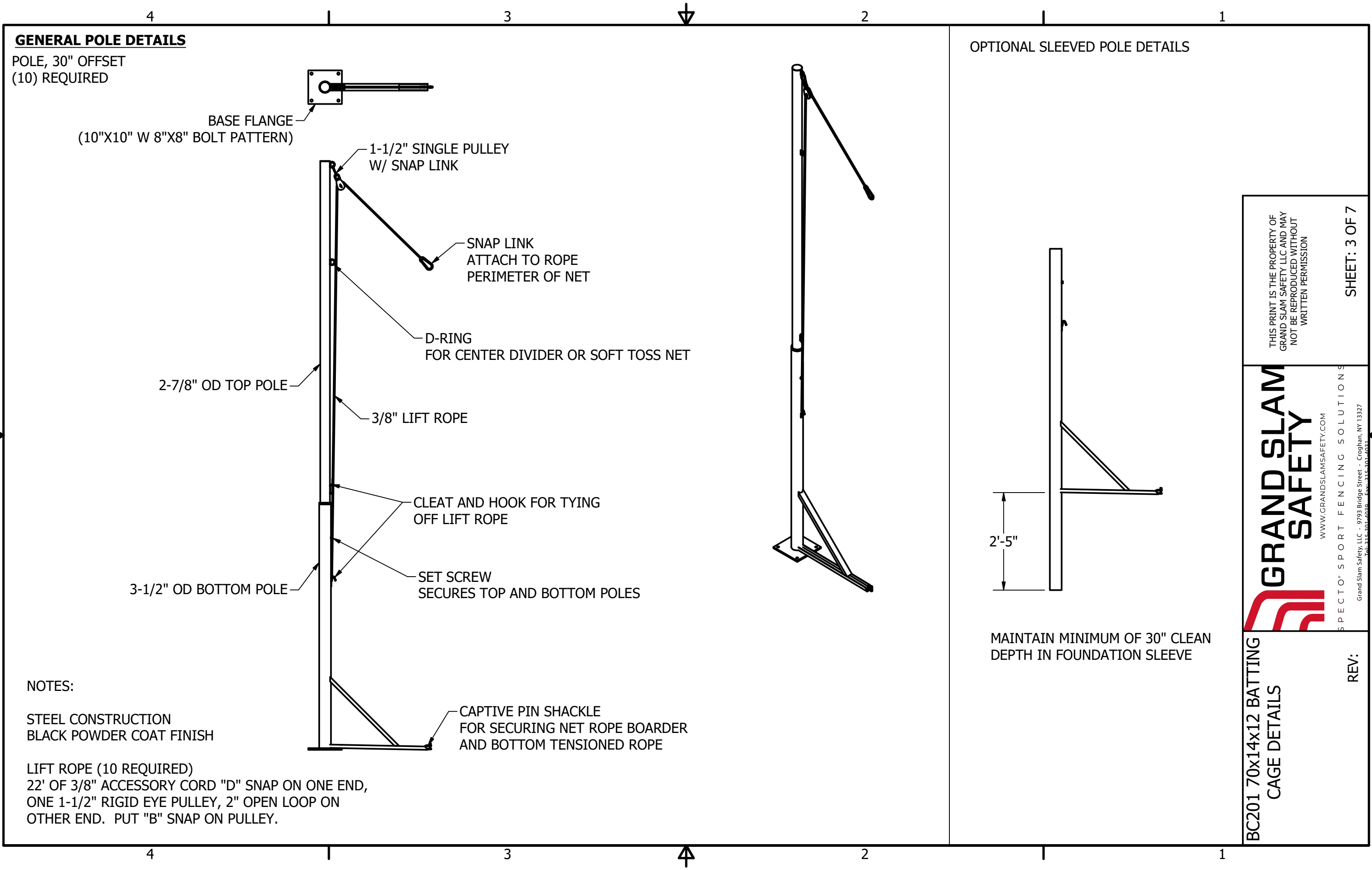
SHEET: 2 OF 7



WWW.GRANDSLAMSAFETY.COM
Grand Slam Safety, LLC - 9793 Bridge Street - Croghan, NY 13327
Tel: 315-301-4030 Fax: 315-301-4031

BC201 70x14x12 BATTING
CAGE DETAILS

REV:



THIS PRINT IS THE PROPERTY OF
GRAND SLAM SAFETY LLC AND MAY
NOT BE REPRODUCED WITHOUT
WRITTEN PERMISSION

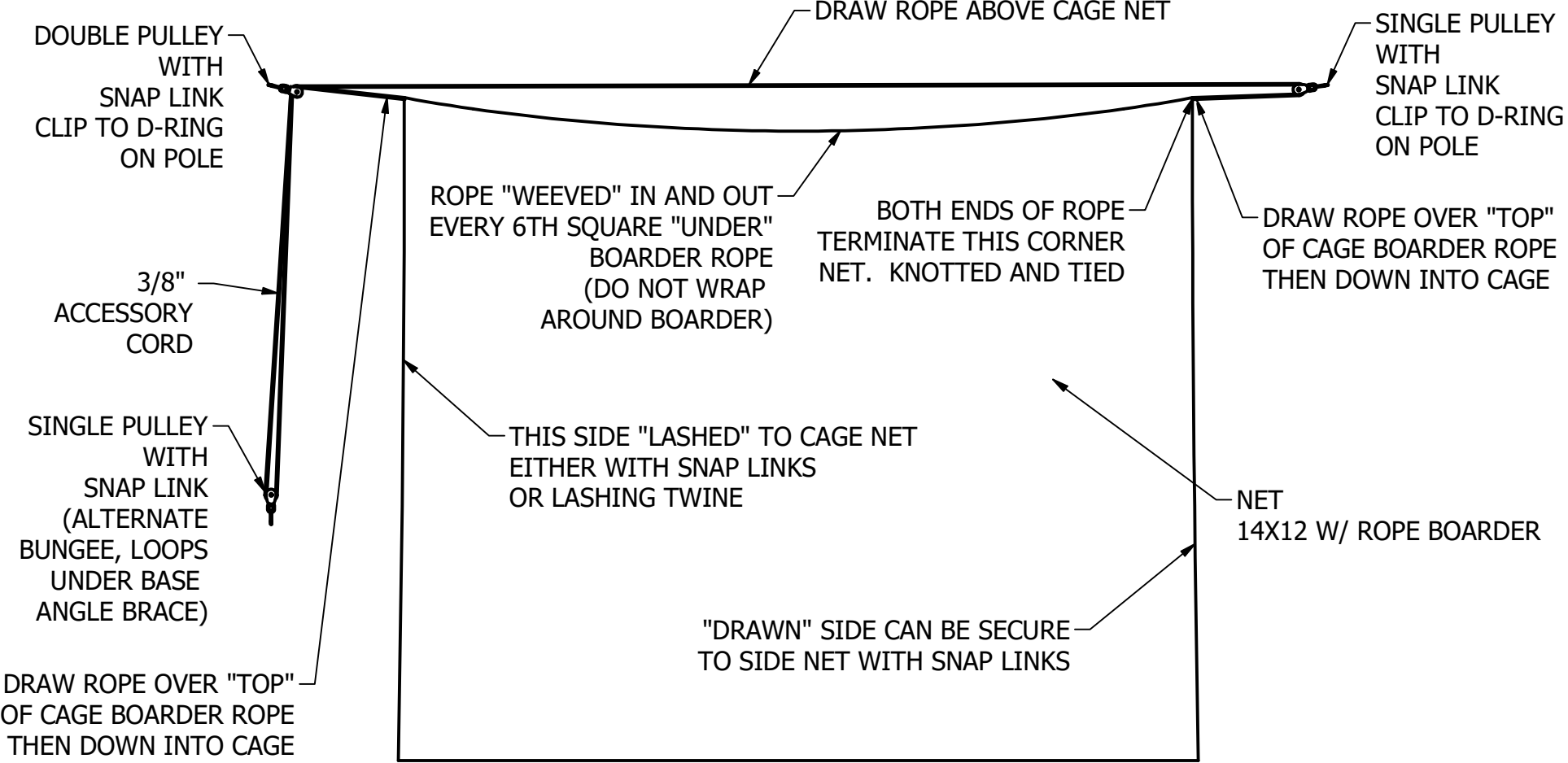
**GRAND SLAM
SAFETY**
WWW.GRANDSLAMSAFETY.COM
SPECTO® SPORT FENCING SOLUTIONS
Grand Slam Safety, LLC - 9793 Bridge Street - Croghan, NY 13327
Tel: 315-301-4030 Fax: 315-301-4031

BC201 70x14x12 BATTING
CAGE DETAILS

REV:

SHEET: 3 OF 7

CENTER DIVIDER OPTION



NET CAN BE INSTALLED WITH DRAW ROPE (DOUBLE PULLEY) ON EITHER SIDE, LIKEWISE LASHED
SIDE CAN BE EITHER SIDE.
TYPICAL SETUP WITH DRAW ROPE ON SAME SIDE AS DOORS AND LASHED ON DOOR SIDE.

CENTER DIVIDER ROPE:

- 60' 8MM ACCESSORY CORD
- (2) 1-1/2 PULLEYS
- (1) 1-1/2 DOUBLE PULLEY
- (3) "B" SNAPS
- (1) 1/4" BUNGEE 2' LONG, WITH 2 SMALL LOOPS TO GO ON "B" SNAP

THIS PRINT IS THE PROPERTY OF
GRAND SLAM SAFETY LLC AND MAY
NOT BE REPRODUCED WITHOUT
WRITTEN PERMISSION

SHEET: 4 OF 7

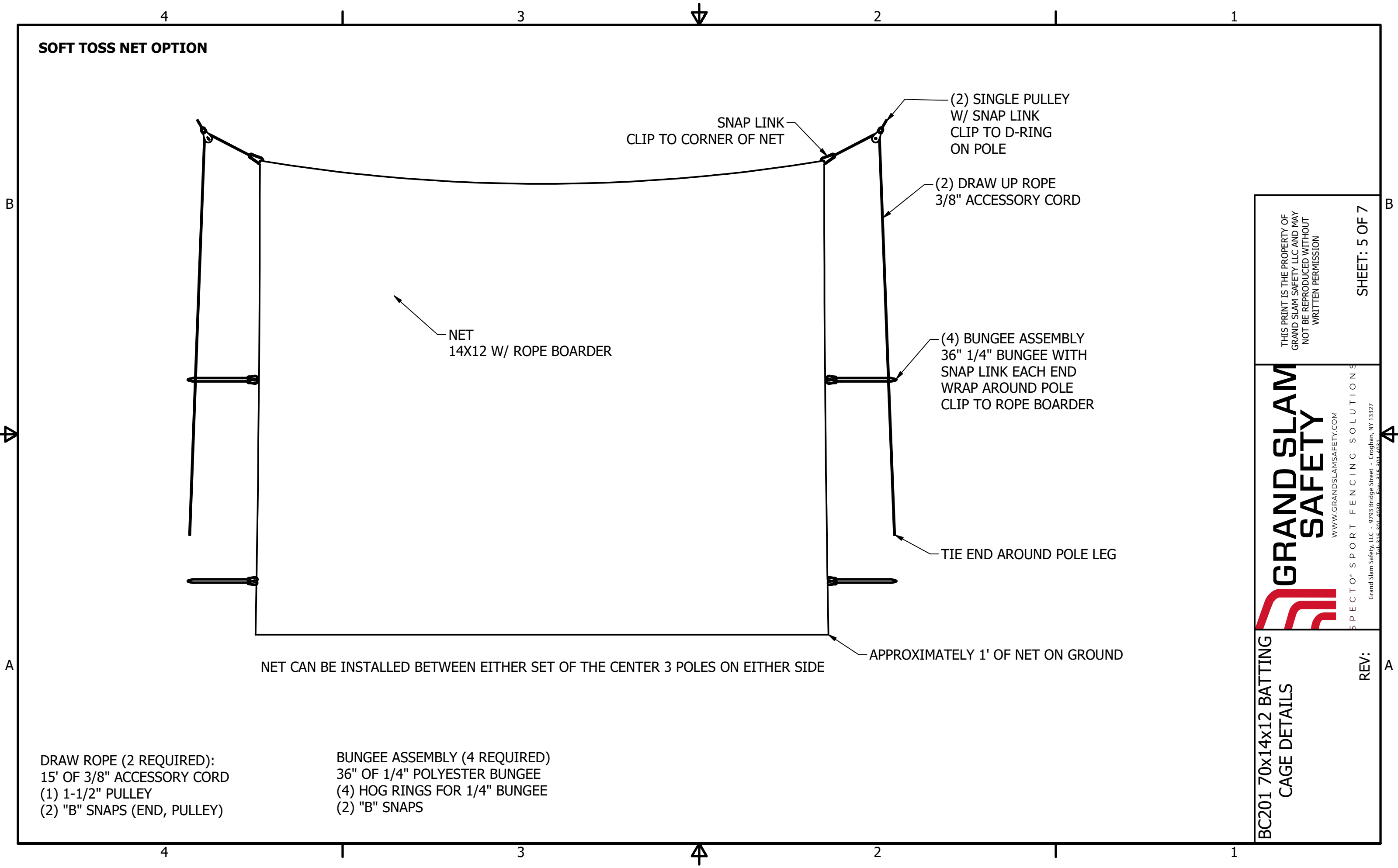


WWW.GRANDSLAMSAFETY.COM
Grand Slam Safety, LLC - 9793 Bridge Street - Croghan, NY 13327
Tel: 315-301-4030 Fax: 315-301-4031

BC201 70x14x12 BATTING
CAGE DETAILS

REV:

SOFT TOSS NET OPTION



DRAW ROPE (2 REQUIRED):
15' OF 3/8" ACCESSORY CORD
(1) 1-1/2" PULLEY
(2) "B" SNAPS (END, PULLEY)

BUNGEE ASSEMBLY (4 REQUIRED)
36" OF 1/4" POLYESTER BUNGEE
(4) HOG RINGS FOR 1/4" BUNGEE
(2) "B" SNAPS

THIS PRINT IS THE PROPERTY OF
GRAND SLAM SAFETY LLC AND MAY
NOT BE REPRODUCED WITHOUT
WRITTEN PERMISSION

**GRAND SLAM
SAFETY**
WWW.GRANDSLAMSAFETY.COM

SPECTO® SPORT FENCING SOLUTIONS
Grand Slam Safety, LLC - 9793 Bridge Street - Croghan, NY 13327
Tel-315-301-4030 Fax-315-301-4031

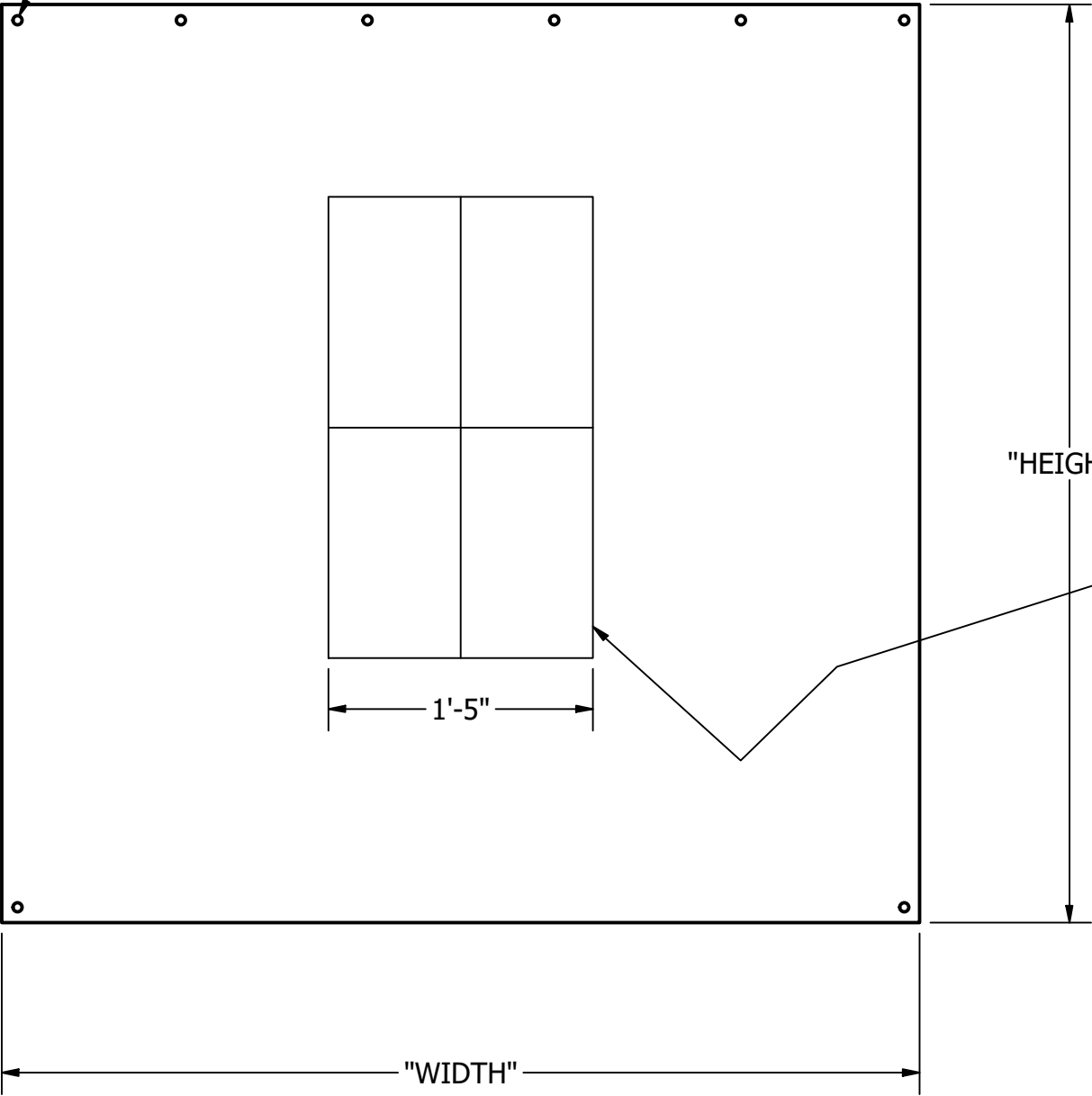
BC201 70x14x12 BATTING
CAGE DETAILS

REV:

SHEET: 5 OF 7

BACK DROP OPTION

#4 ROLLED RIM GROMMETS
Ø9/16" DIAMETER
EACH CORNER AND 12" SPACING ALONG TOP



18oz VINYL OR DOUBLE LAYER 8oz MESH

SELECTION:

MATERIAL:

18 OZ VINYL ☐BLACK ☐BLUE ☐GREEN ☐YELLOW ☐RED
OR
8 OZ MESH (DOUBLE LAYER) ☐BLACK ☐BLUE ☐GREEN ☐YELLOW ☐RED)

HEIGHT: _____FT_____INCH

WIDTH: _____FT_____INCH

(NOTE: HEIGHT OR WIDTH MUST BE LESS 4'-4" IF NO SEAMS ARE DESIRED)

OPTIONAL:
STRIKE ZONE
1" WHITE PERIMETER AND CROSS LINES

SPECIFY SIZE 17" WIDE X (SZH): _____

PLAYER HEIGHT	SZH (STRIKE ZONE HEIGHT)
6'-6"	31 3/4"
6'-0"	29 1/2"
5'-6"	27 1/2"
5'-0"	25 1/2"
CUSTOM	

THIS PRINT IS THE PROPERTY OF
GRAND SLAM SAFETY LLC AND MAY
NOT BE REPRODUCED WITHOUT
WRITTEN PERMISSION

SHEET: 6 OF 7



BC201 70x14x12 BATTING
CAGE DETAILS

REV:

4

3

2

1

INSTALLATION:

1. UNPACK - VERIFY CONTENTS

2. LAYOUT POLES, INSTALL BASES TO SLAB PER LAYOUT

3. ATTACH ROPES AND HARDWARE TO POLE TOPS

4. INSTALL POLE TOPS, INSERT AND SNUG SET SCREWS

5. LAYOUT NET, PAY ATTENTION TO DOOR POSITION - ORIENT DOORS TO SIDE DESIRED

6. CLIP LIFT ROPES TO NET

7. PULL NET UP, WORKING ROPES EVENLY, IT MAY BE NECESSARY TO WORK IN 4' INCREMENTS, LEAVING 1' ON GROUND.
(NOTE: WHEN NET IS APPROX 6' OFF GROUND, INSTALL CENTER DIVIDER IF NOT SUPPLIED INSTALLED)

8. INSTALL BOTTOM ROPES AND TENSIONERS: START LEFT OF DOOR, TIE A SLIP KNOT AND PUT IN CORNER SHACKLE, WEAVE BACK AND FORTH THRU NET ABOVE THE BOTTOM ROPE BOARDER, STARTING IN CORNER, ~12' INCREMENTS, WORKING IN A "U" ALONG LONG SIDE, ACROSS END, AND BACK TO OTHER CORNER. INSTALL ONE END OF TENSIONER ON SHACKLE, RUN ROPE THRU SUCH THAT WHEN PULLED IT MAINTIANS TENSION (LEAVE LOOSE).

9. INSTALL BOTTOM NET BOARDER AND BOTTOM ROPE IN SHACKLES, SNUG SHACKLE SCREWS

10. PULL BOTTOM ROPE TIGHT THRU TENSIONERS (IT MAY BE NECESSARY TO CUT EXCESS ROPE OFF - LEAVE 2-3', WEAVE THRU NET)

11. FINISH PULLING UP NET UNTIL SIDES ARE SNUG.

12. SECURE ALL ROPES TO CLEATS.

13. SECURE BOTTOM CENTER DIVIDER PULLEY TO BOTTOM J-HOOK OR ANGLE BRACKET.

THIS PRINT IS THE PROPERTY OF
GRAND SLAM SAFETY LLC AND MAY
NOT BE REPRODUCED WITHOUT
WRITTEN PERMISSION

SHEET: 7 OF 7

BC201 70x14x12 BATTING
CAGE DETAILS

REV:

GRAND SLAM
SAFETY

WWW.GRANDSLAMSAFETY.COM

SPECTO® SPORT FENCING SOLUTIONS

Grand Slam Safety, LLC - 9793 Bridge Street - Croghan, NY 13327
Tel: 315-301-4030 - Fax: 315-301-4031

4