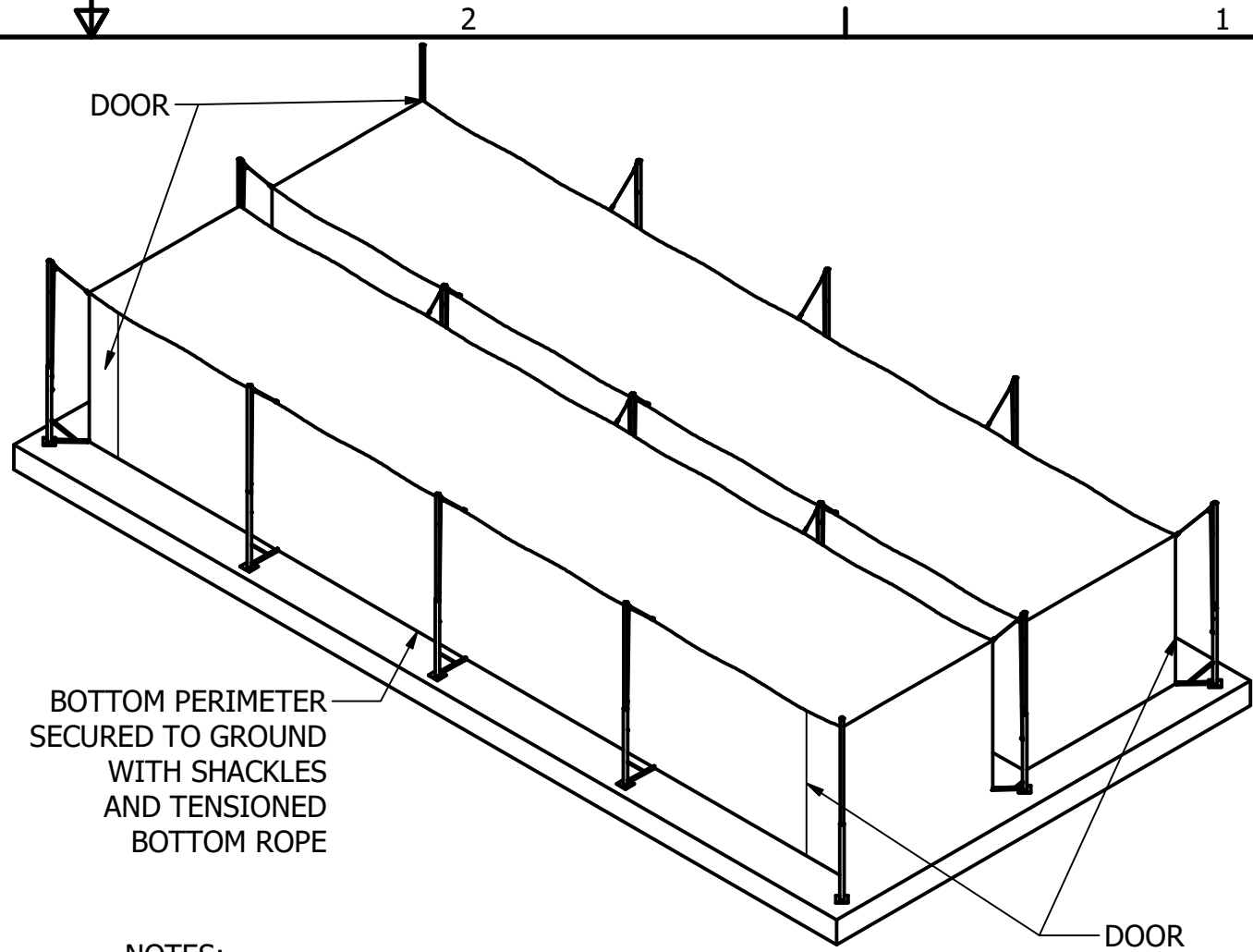


FLANGED MOUNTED SYSTEM SHOWN, SLEEVED SYSTEM OPTIONAL, PLEASE SPECIFY



NOTES:

- 4' WIDE ENTRY FLAP (OVERLAP) DOOR
- NETTING 1-3/4 SQ BLACK, SPECIFY MATERIAL BELOW
- POWDER COATED 3 1/2" BASE POLES, 2-7/8" TOP POLES WITH POLYESTER ROPE FOR TENSIONING NET
- BOTTOM ROPE TENSIONED AND SECURED TO POLES TO HOLD NET BOTTOM IN POSITION
- FLANGE ANCHOR BOLTS, (60) 1/2" X 7" HOT DIP GALVANIZED WEDGE ANCHOR BOLTS
- CONCRETE PAD BY OTHERS, MIN RECOMMENDED SIZE 38'-6" X 76'-6", 5" THICK WITH 1'DP X 3'WD THICKENED PERIMETER AND 1'DP X 3'WD x 3'L AT EACH CENTER POST FOR ANCHOR BOLT.

(PLEASE SPECIFY):

NETTING: ☐ #42 HDPE, ☐ #42 KNOTTED NYLON, ☐ #36 KNOTTED NYLON NETTING

☐ FLANGED OR ☐ SLEEVED POLES

CENTER DIVIDER: ☐ YES, ☐ NO

PITCHING TARGET: ☐ YES QTY:____, ☐ NO

SOFT TOSS NET: ☐ YES QTY:____, ☐ NO

THIS PRINT IS THE PROPERTY OF
GRAND SLAM SAFETY LLC AND MAY
NOT BE REPRODUCED WITHOUT
WRITTEN PERMISSION

GRAND SLAM
SAFETY

WWW.GRANDSLAMSAFETY.COM

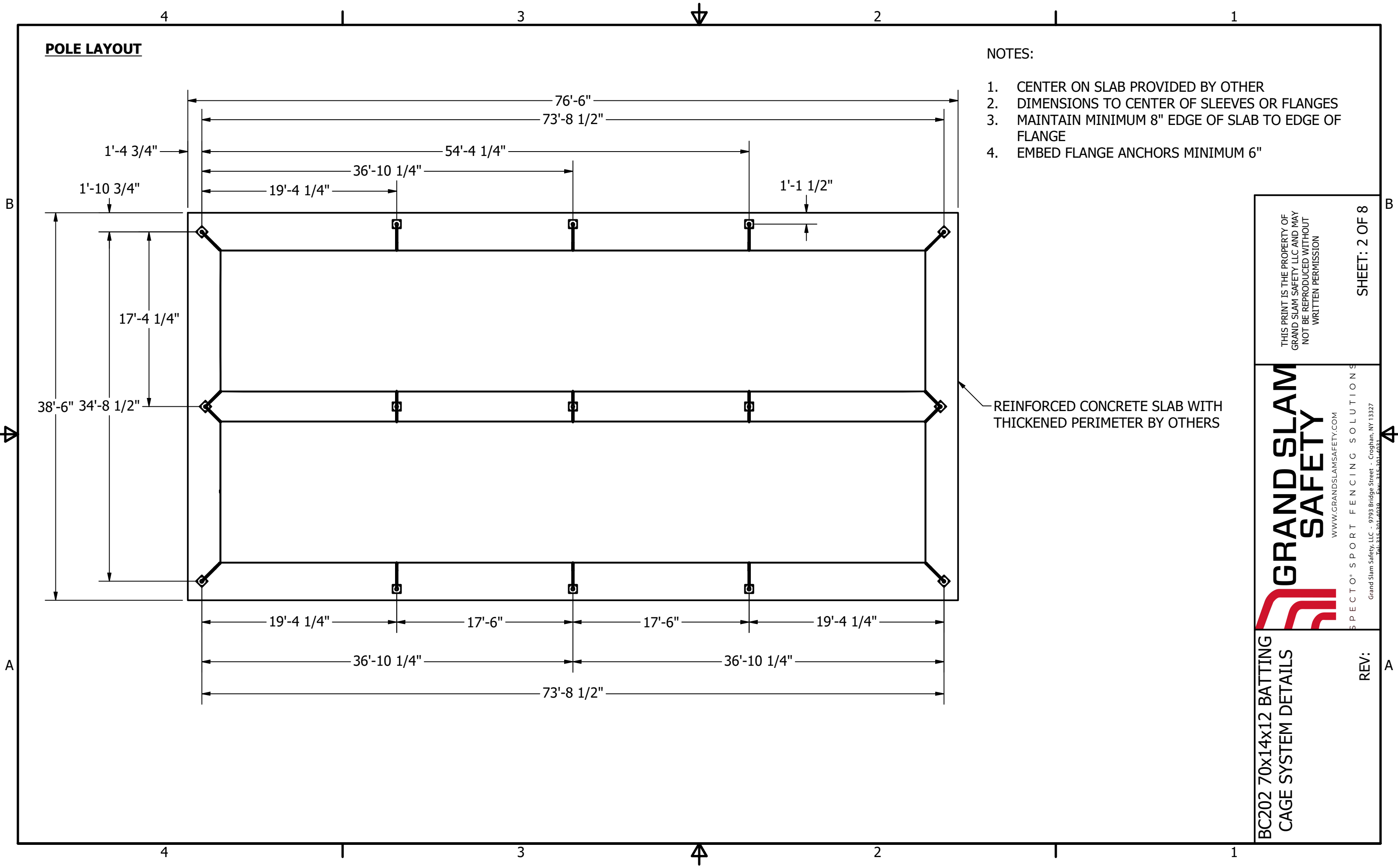
SPECTO® SPORT FENCING SOLUTIONS

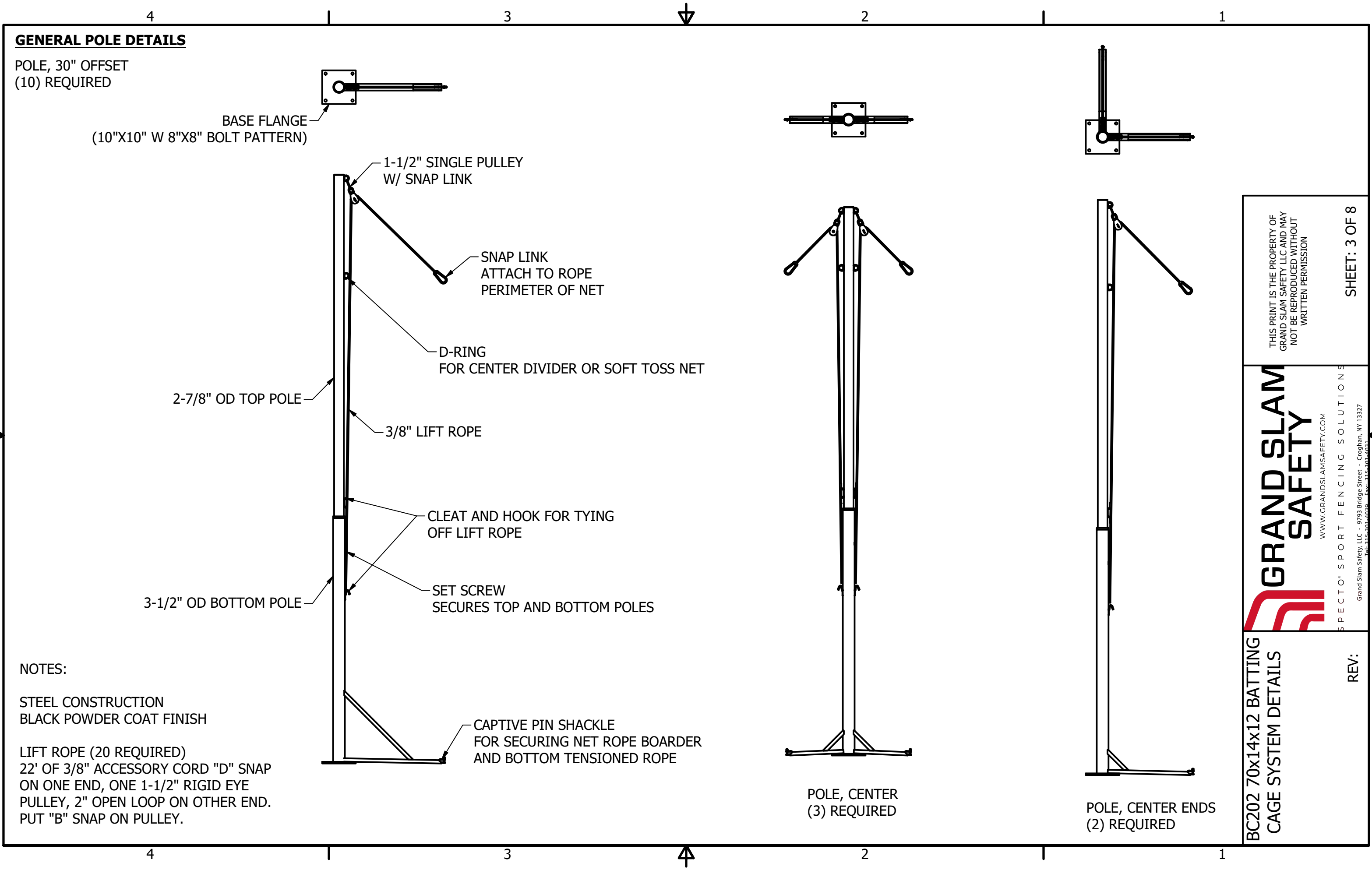
Grand Slam Safety, LLC - 9793 Bridge Street - Croghan, NY 13327
Tel: 315-301-4030 Fax: 315-301-4031

REV:

BC202 70x14x12 BATTING
CAGE SYSTEM DETAILS

SHEET: 1 OF 8





THIS PRINT IS THE PROPERTY OF
GRAND SLAM SAFETY LLC AND MAY
NOT BE REPRODUCED WITHOUT
WRITTEN PERMISSION

SHEET: 3 OF 8

GRAND SLAM SAFETY

WWW.GRANDSLAMSAFETY.COM

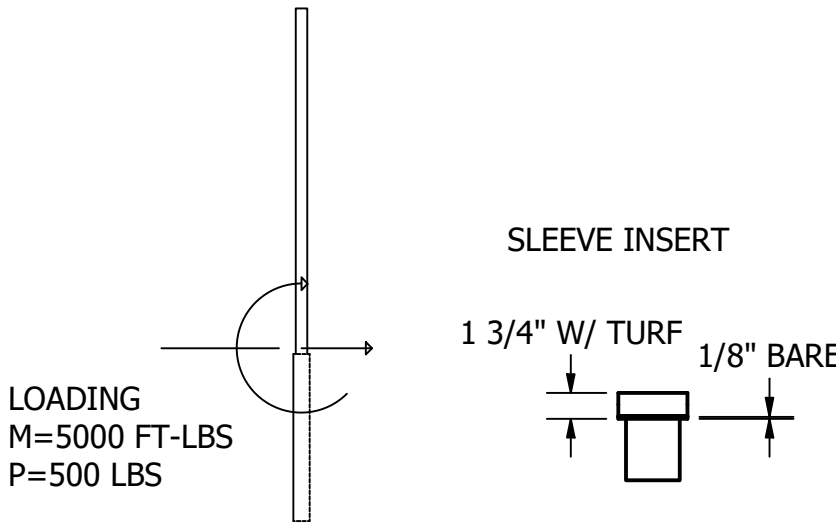
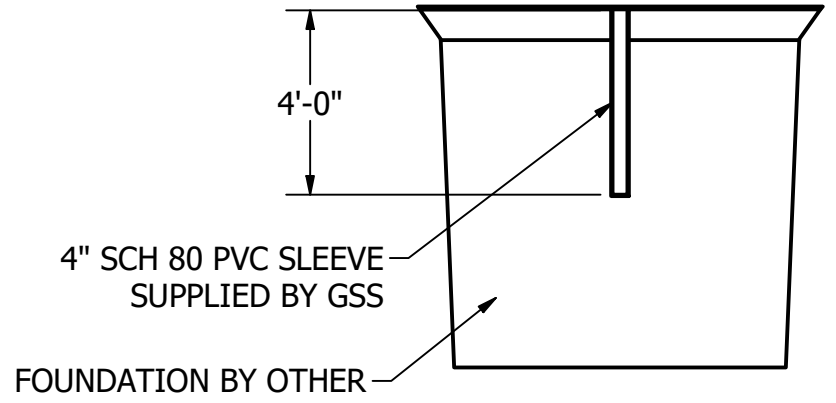
SPECTO® SPORT FENCING SOLUTIONS

Grand Slam Safety, LLC - 9793 Bridge Street - Croghan, NY 13327
Tel: 315-301-4030 Fax: 315-301-4031

BC202 70x14x12 BATTING
CAGE SYSTEM DETAILS

REV:

OPTIONAL SLEEVED FOUNDATION DETAILS

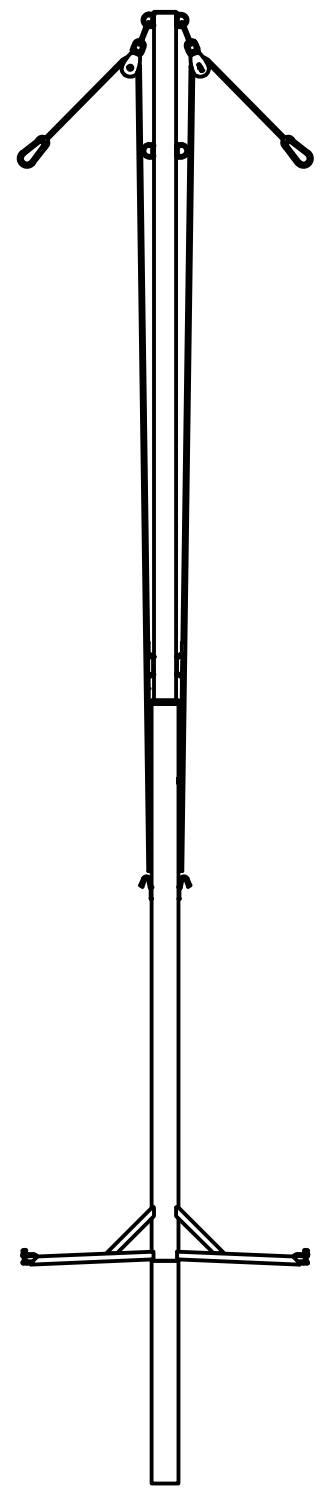
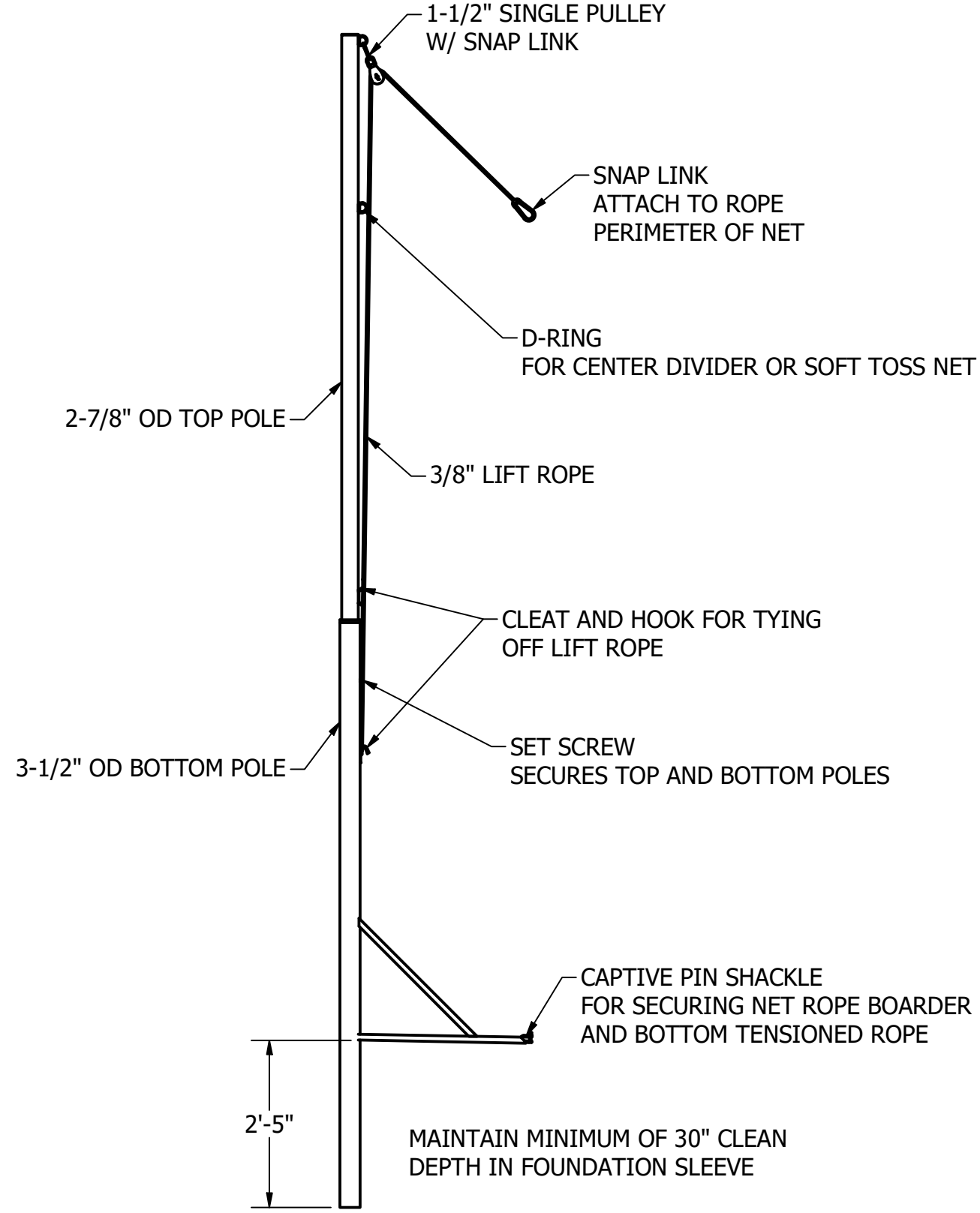


FOUNDATION DESIGN:

GRAND SLAM SAFETY (GSS) IS NOT RESPONSIBLE FOR THE DESIGN, SPECIFICATION, OR WORKMANSHIP OF THE FOUNDATIONS. ANCHOR BOLT AND SLEEVE DETAILS HAVE BEEN PROVIDED ONLY TO SHOW MINIMUM REQUIREMENTS NECESSARY TO ATTACH THE POLES TO THE FOUNDATIONS. IT REMAINS THE OWNER'S, OR THE OWNER'S ENGINEER'S RESPONSIBILITY TO DETERMINE ALLOWABLE SOIL BEARING VALUES; DESIGN, SPECIFY, AND FURNISH THE FOUNDATIONS, ANCHOR BOLTS, AND SLEEVES; CONSIDER ANY SPECIAL LOADING OR CONDITIONS OF THE PROJECT SITE; AND TO INCLUDE ALL APPLICABLE PROVISIONS OF THE APPROPRIATE BUILDING CODE RELATED TO THE DESIGN OF THE FOUNDATIONS.

ALL ULTIMATE LOADING SHOWN IN THIS DETAIL IS PROVIDED IN NON-FACTORED FORM. MAXIMUM LOADS AT POLE LOCATIONS BASE ON THEORETICAL 50 MPH WIND LOADING ON NETTING.

OPTIONAL SLEEVED POLE DETAILS



THIS PRINT IS THE PROPERTY OF
GRAND SLAM SAFETY LLC AND MAY
NOT BE REPRODUCED WITHOUT
WRITTEN PERMISSION

SHEET: 4 OF 8

**GRAND SLAM
SAFETY**

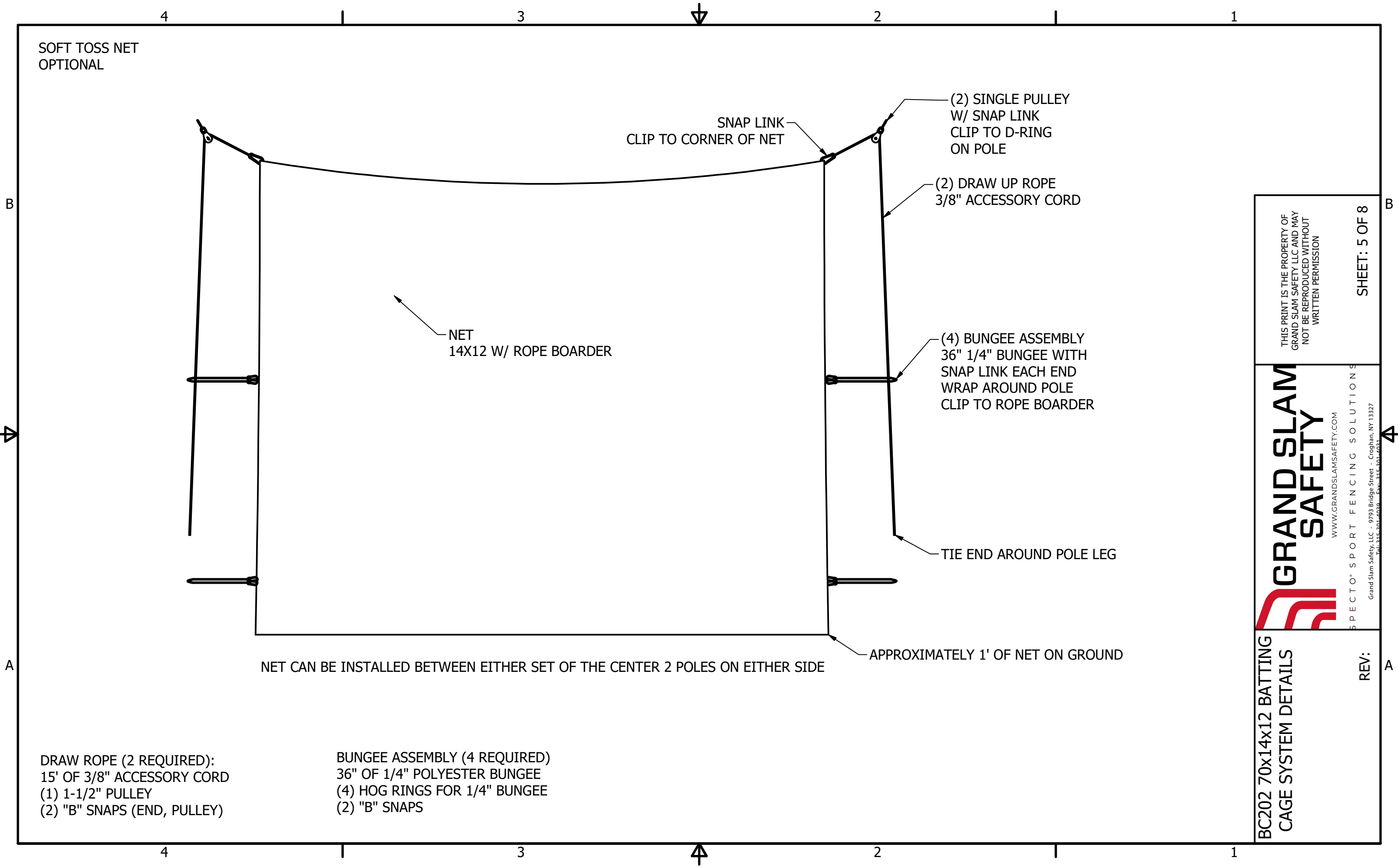
WWW.GRANDSLAMSAFETY.COM

SPECTO® SPORT FENCING SOLUTIONS

Grand Slam Safety, LLC - 9793 Bridge Street - Croghan, NY 13327
Tel: 315-301-4030 Fax: 315-301-4031

BC202 70x14x12 BATTING
CAGE SYSTEM DETAILS

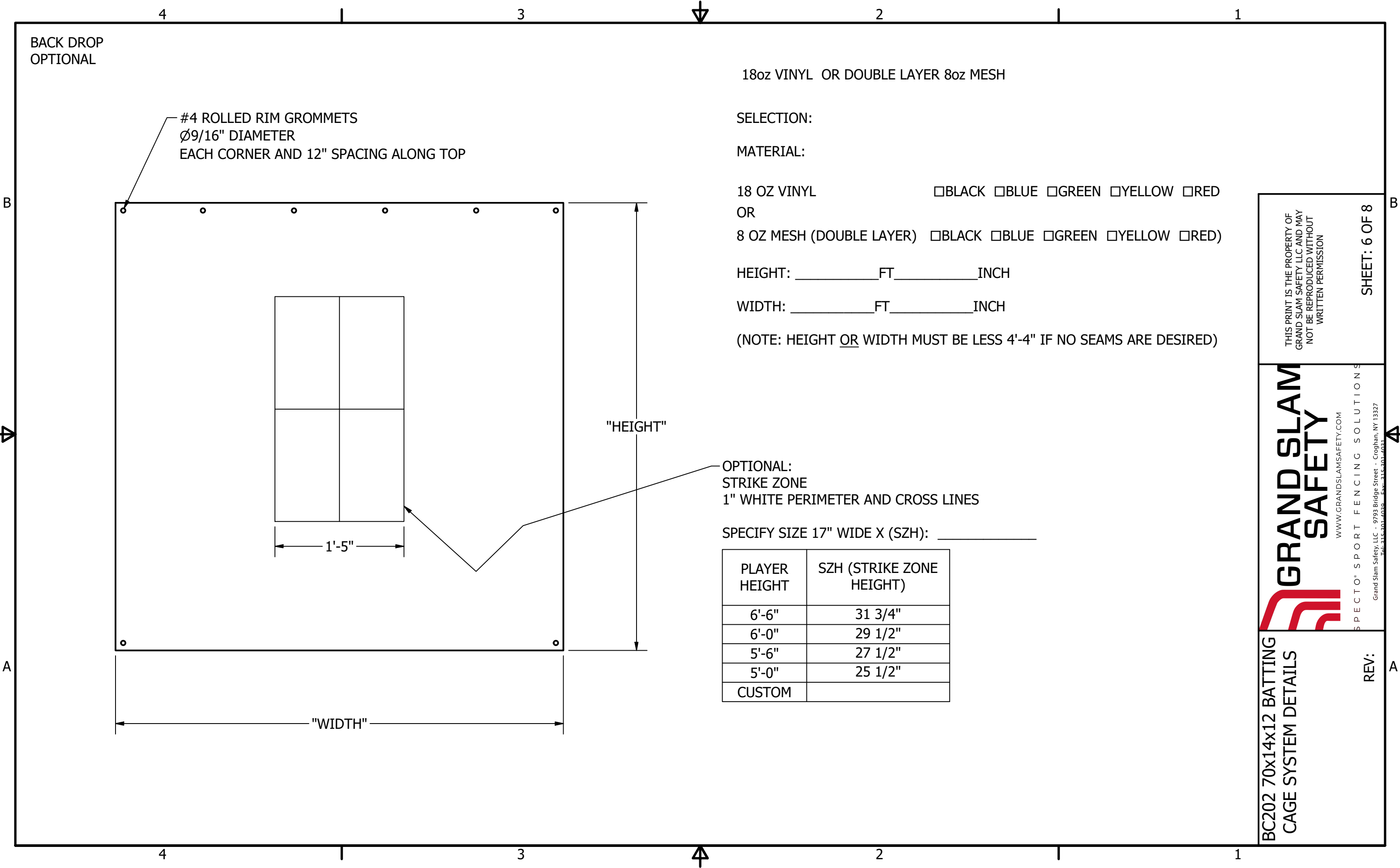
REV:



DRAW ROPE (2 REQUIRED):
15' OF 3/8" ACCESSORY CORD
(1) 1-1/2" PULLEY
(2) "B" SNAPS (END, PULLEY)


BUNGEE ASSEMBLY (4 REQUIRED)
36" OF 1/4" POLYESTER BUNGEE
(4) HOG RINGS FOR 1/4" BUNGEE
(2) "B" SNAPS

BC202 70x14x12 BATTING CAGE SYSTEM DETAILS	 GRAND SLAM SAFETY <small>WWW.GRANDSLAMSAFETY.COM</small> SPECTO® SPORT FENCING SOLUTIONS <small>Grand Slam Safety, LLC - 9793 Bridge Street - Croghan, NY 13327 Tel: 315-301-4030 Fax: 315-301-4031</small>	THIS PRINT IS THE PROPERTY OF GRAND SLAM SAFETY LLC AND MAY NOT BE REPRODUCED WITHOUT WRITTEN PERMISSION	SHEET: 5 OF 8
	REV:		



BC202 70x14x12 BATTING
CAGE SYSTEM DETAILS

REV:

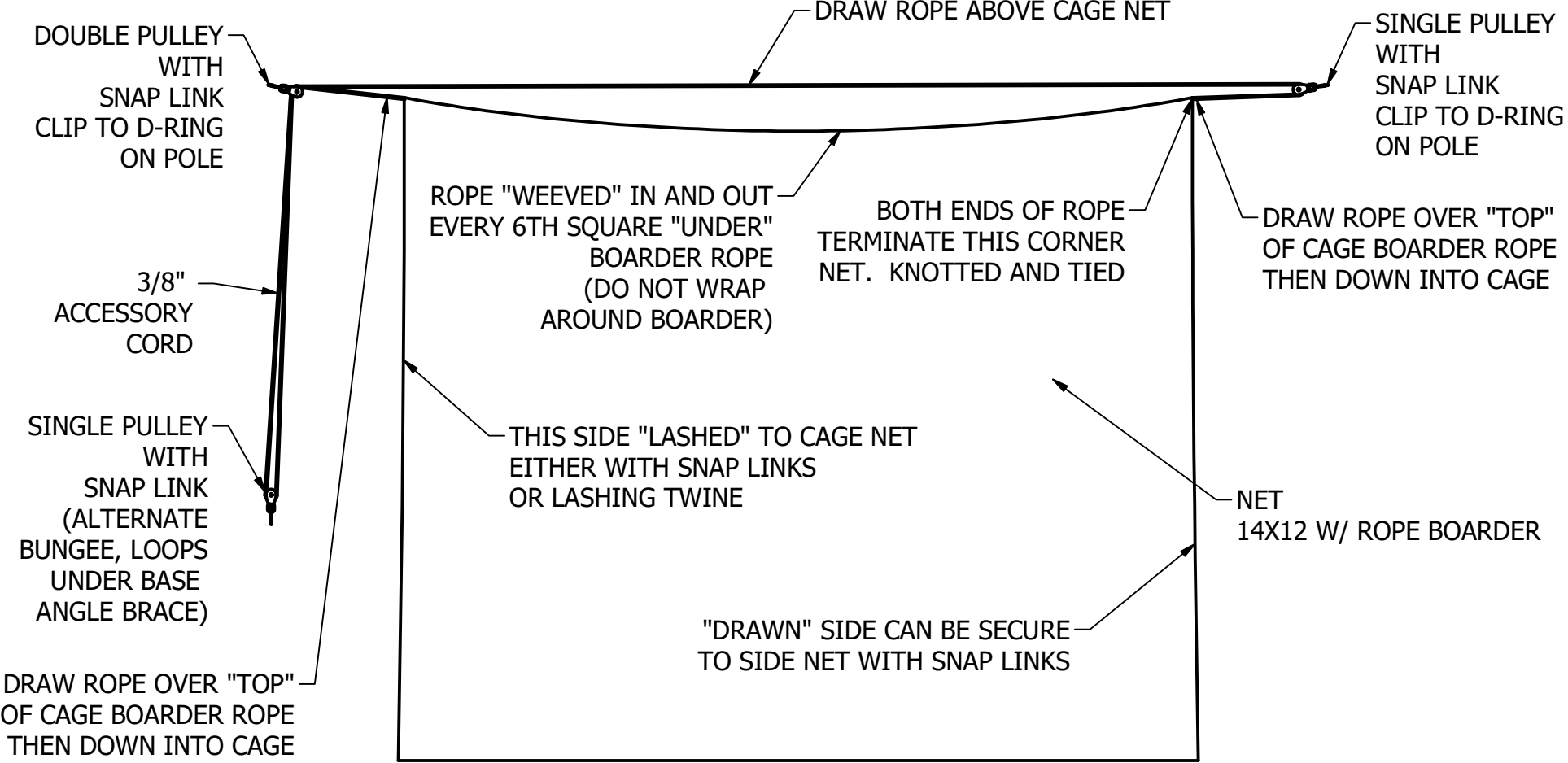
**GRAND SLAM
SAFETY**
WWW.GRANDSLAMSAFETY.COM

SPECTO® SPORT FENCING SOLUTIONS
Grand Slam Safety, LLC - 9793 Bridge Street - Croghan, NY 13327
Tel-315-301-4030 Fax-315-301-4031

THIS PRINT IS THE PROPERTY OF
GRAND SLAM SAFETY LLC AND MAY
NOT BE REPRODUCED WITHOUT
WRITTEN PERMISSION

SHEET: 6 OF 8

CENTER DIVIDER OPTION



NET CAN BE INSTALLED WITH DRAW ROPE (DOUBLE PULLEY) ON EITHER SIDE, LIKEWISE LASHED SIDE CAN BE EITHER SIDE.
TYPICAL SETUP WITH DRAW ROPE ON SAME SIDE AS DOORS AND LASHED ON DOOR SIDE.

CENTER DIVIDER ROPE:

- 60' 8MM ACCESSORY CORD
- (2) 1-1/2 PULLEYS
- (1) 1-1/2 DOUBLE PULLEY
- (3) "B" SNAPS
- (1) 1/4" BUNGEE 2' LONG, WITH 2 SMALL LOOPS TO GO ON "B" SNAP

THIS PRINT IS THE PROPERTY OF
GRAND SLAM SAFETY LLC AND MAY
NOT BE REPRODUCED WITHOUT
WRITTEN PERMISSION

SHEET: 7 OF 8



WWW.GRANDSLAMSAFETY.COM
Grand Slam Safety, LLC - 9793 Bridge Street - Croghan, NY 13327
Tel: 315-301-4030 Fax: 315-301-4031

BC202 70x14x12 BATTING
CAGE SYSTEM DETAILS

REV:

INSTALLATION:

1. UNPACK - VERIFY CONTENTS
2. LAYOUT POLES, INSTALL BASES TO SLAB PER LAYOUT
3. ATTACH ROPES AND HARDWARE TO POLE TOPS
4. INSTALL POLE TOPS, INSERT AND SNUG SET SCREWS
5. LAYOUT NET, PAY ATTENTION TO DOOR POSITION - ORIENT DOORS TO SIDE DESIRED
6. CLIP LIFT ROPES TO NET
7. PULL NET UP, WORKING ROPES EVENLY, IT MAY BE NECESSARY TO WORK IN 4' INCREMENTS, LEAVING 1' ON GROUND.
(NOTE: WHEN NET IS APPROX 6' OFF GROUND, INSTALL CENTER DIVIDER IF NOT SUPPLIED INSTALLED)
8. INSTALL BOTTOM ROPES AND TENSIONERS: START LEFT OF DOOR, TIE A SLIP KNOT AND PUT IN CORNER SHACKLE, WEAVE BACK AND FORTH THRU NET ABOVE THE BOTTOM ROPE BOARDER, STARTING IN CORNER, ~12' INCREMENTS, WORKING IN A "U" ALONG LONG SIDE, ACROSS END, AND BACK TO OTHER CORNER. INSTALL ONE END OF TENSIONER ON SHACKLE, RUN ROPE THRU SUCH THAT WHEN PULLED IT MAINTAINS TENSION (LEAVE LOOSE).
9. INSTALL BOTTOM NET BOARDER AND BOTTOM ROPE IN SHACKLES, SNUG SHACKLE SCREWS
10. PULL BOTTOM ROPE TIGHT THRU TENSIONERS (IT MAY BE NECESSARY TO CUT EXCESS ROPE OFF - LEAVE 2-3', WEAVE THRU NET)
11. FINISH PULLING UP NET UNTIL SIDES ARE SNUG.
12. SECURE ALL ROPES TO CLEATS.
13. SECURE BOTTOM CENTER DIVIDER PULLEY TO BOTTOM J-HOOK OR ANGLE BRACKET.

THIS PRINT IS THE PROPERTY OF
GRAND SLAM SAFETY LLC AND MAY
NOT BE REPRODUCED WITHOUT
WRITTEN PERMISSION

SHEET: 8 OF 8



SEPCO I CORP. INC. 2010

Tel: 315.301.4030 Fax: 315.301.4031

BC202 70x14x12 BATTING CAGE SYSTEM DETAILS

REV.